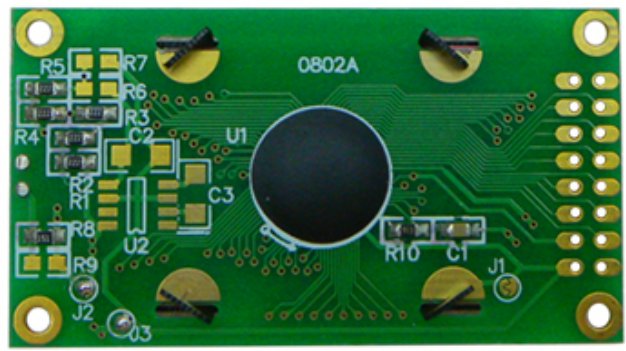


0802 LCD STN 8x2 LCD

LCD	0802 LCD STN 8x2 LCD		
Resolution	8*2	Character	STN
LCD Type	DOT MATRIX	Character	STN
Dimensions	58.0w x 32h x 6.8max t mm	Character	38.0min w x 16.0min h mm
Pin Count	6	Character	4*8 MPU
Pin Pitch	1.27	Character	1/16 1/5
Operating Temp	-20°C + 70°C	Character	-30°C + 80°C



- 8x2
- STN
- COB
- Character
- Transmissive & Negative

