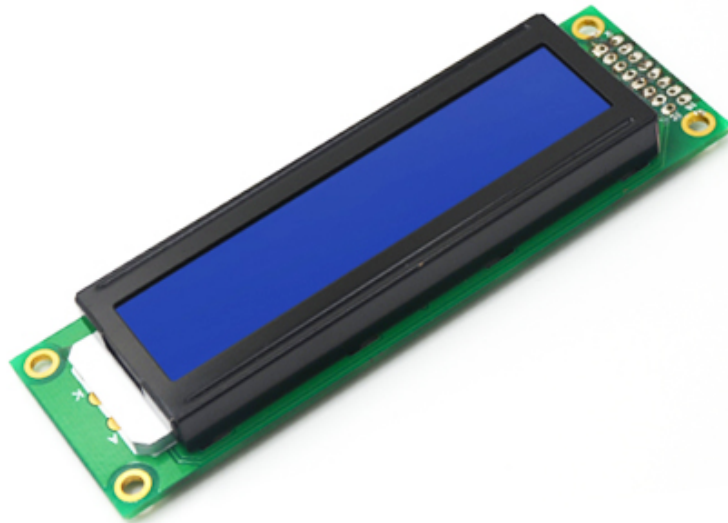


20 x 2 LCD Character Custom LCD Display Module 20x2 LCM

LCD Name	20 x 2 LCD Character Custom LCD Display Module 20x2 LCM		
Display Format	20character*2 line	Display Mode	STN(BLUE) , Negative ,Transmissive
LCD Color	Backlight : White	IC	ST7066U-0A English / Japan Font
Outline Dimension	116.0mm*37.0mm*14.6mm(MAX)mm	Viewing Area	83.0mm*18.6mm
Viewing Direction	6 O'clock	Built-in controller	HD44780(or equivalent)
Backlight	WHITE	Driving Method	1/16 Duty, 1/5 Bias
Operating Temp.	-20°C~+70°C	Storage Temp.	-30°C~+80°C





- 20x4
- STN
- COB
- Character
- Transmissive & Negative

