

7inch 800*480 40pins WLED TFT LCD Display 7 Inch LVDS 40 Pin LCD Module for 7inch LCD Board



PRODUCT INFORMATION

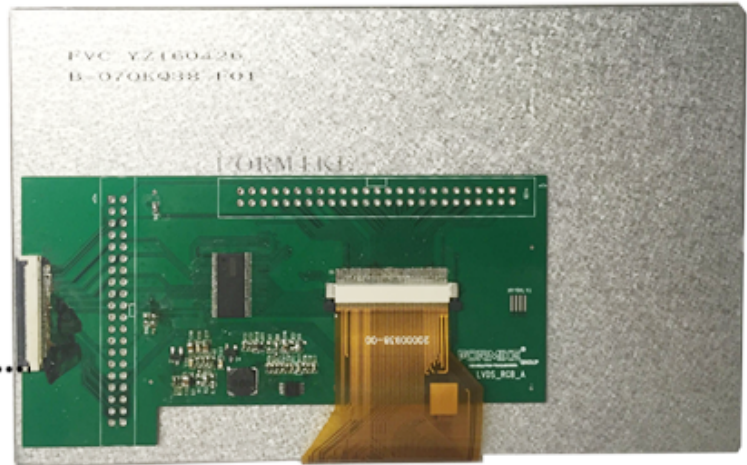
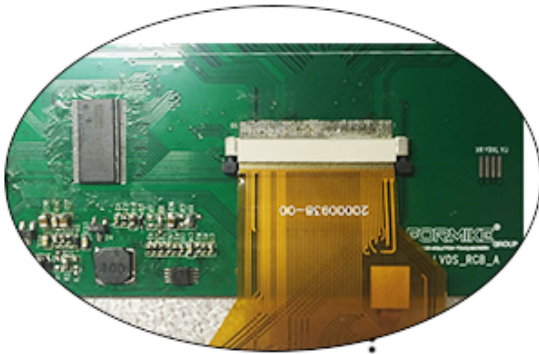
T F T L C D D I S P L A Y

LCD Name	7inch 800*480 40pins WLED TFT LCD Display 7 Inch LVDS 40 Pin LCD Module for 7inch LCD Board		
LCD Size	7 inch LCD Module	Resolution	800(RGB)X480 Resolution
Color Depth	16M	Contrast Ratio	500:1
Outline Dimension	164.90x 100.00 x 9.5mm	Active Area(HxV mm)	154.08x85.92mm
Viewing Direction	6 O'clock	Interface	LVDS or RGB, 40 Pin
Backlight	White LED	Brightness	350cd/m2
Operation Temperature	-20~70°C	Backlight Supply Current/Voltage	180mA 9.6V

- * KWH070KQ38-B02 is a Transmissive type color active matrix liquid crystal display (LCD).
- * It is composed of a TFT LCD panel, driver IC, FPC, backlight.
- * It is 800x480 resolution TFT LCD module.
- * Backlight with different brightness options from 200 - 1500cd/m2 are available.
- * Specific touch panel can be designed & customized.
- * RoHS & REACH compliant.
- * If you can't find a suitable one, contact us to get a recommendation.

PRODUCT DISPLAY

T F T L C D D I S P L A Y



T F T L C D D I S P L A Y

PRODUCT DETAILS



- Transmissive screen
- White LED & 6 O'clock
- 40 Pin FPC LVDS Interface
- Good resolution with 800x480
- 7" TFT LCD Display With 16M Color Depth
- Support OEM & ODM Service

APPLICATION

TFT LCD DISPLAY



01 Civilian equipment



02 Office tools



03 Traffic instrument



04 Mini screen



05 Medical and beauty equipment



06 Smart device



07 Automation



08 Control system