

480x272 TFT 4.3" LCD HDMI LCD



PRODUCT INFORMATION

T F T L C D D I S P L A Y

LCD	480x272 TFT 4.3" LCD HDMI LCD		
LCD	4.3" LCD		480 RGB X 272
	1600		500 1
	105.5 x 67.20 x 3.0	HxV mm	95.04 x 53.86 mm
	6		24 BIT RGB 40
	7 LED		300cd /
	-20°C ~ 70°C		20mA 3.3V

HDMI LCD

* KWH043ST43-F01 LCD

* TFT LCD IC FPC

* 480x272 TFT LCD

* 200 1500cd / m²

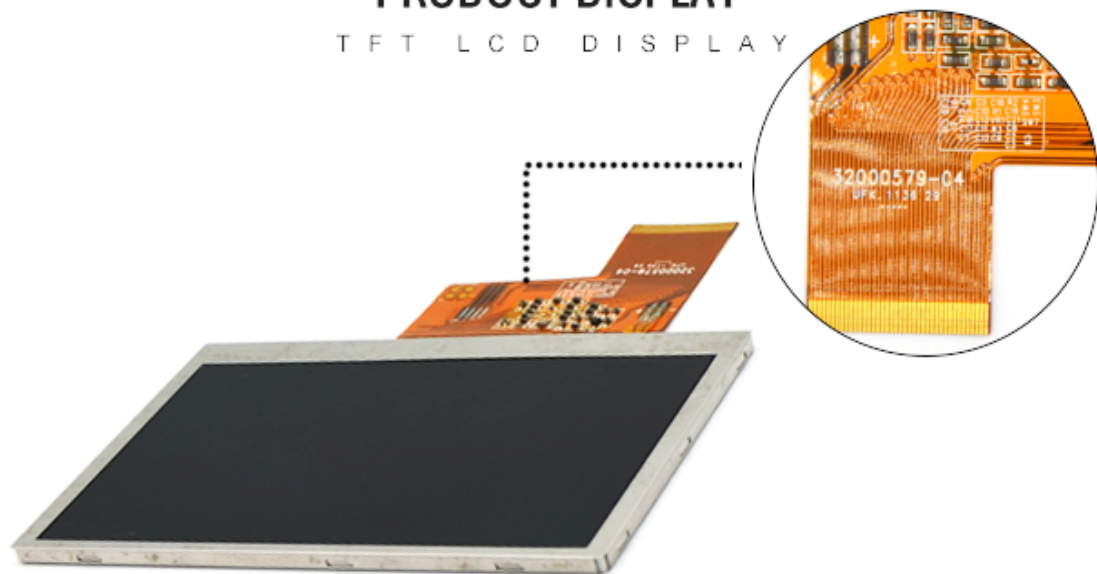
* RoHS REACH

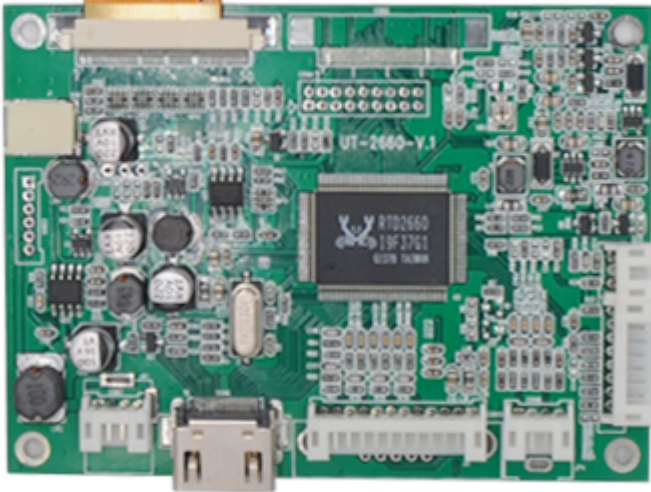
* RoHS REACH

* RoHS REACH

PRODUCT DISPLAY

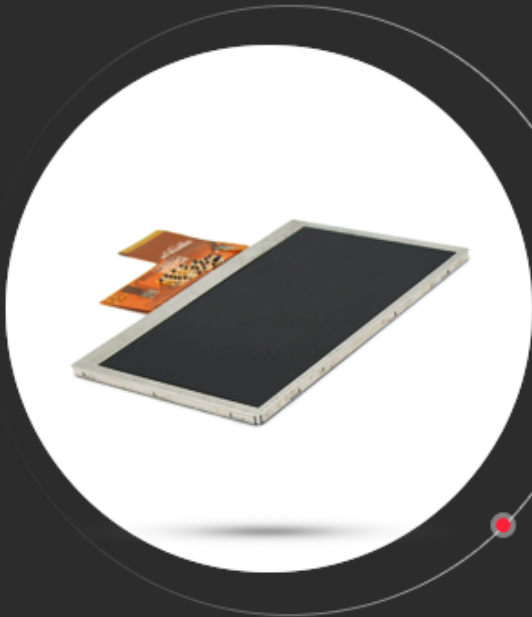
TFT LCD DISPLAY





T F T L C D D I S P L A Y

PRODUCT DETAILS



- High contrast reaches to 500:1
- With ST7282 IC & 7 White LED
- 40 Pin FPC RGB Interface
- Good resolution with 480x272
- 4.3" Landscape With 16M Color Depth
- Support OEM & ODM Service

APPLICATION

T F T L C D D I S P L A Y



01 Civilian equipment



02 Office tools



03 Traffic instrument



04 Mini screen



05 Medical and beauty equipment



06 Smart device



07 Automation



08 Control system