

7" TFT LCD 1024X600 7" TFT



PRODUCT INFORMATION

T F T L C D D I S P L A Y

LCD	7" TFT LCD 1024X600 7" TFT		
LCD	7" LCD		1024 RGB X 600
	16.7m.		600 1
	164.90x 99.90 x 3.50mm	HXV mm	154.21x85.92mm.
	6		24 RGB 50
	21 LED		350cd / m2.
	-20°C 70°C		140mA 9.9V.

* KWH070KQ49-F01 LCD

* TFT LCD IC FPC

* 1024x600 TFT LCD

* 200-1500CD / M2

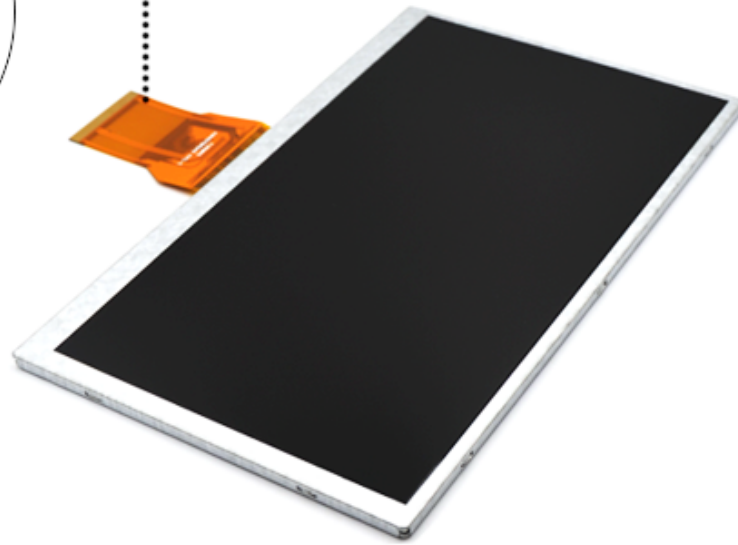
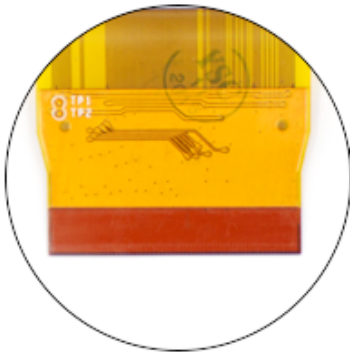
* RoHS REACH

* RoHS REACH

* RoHS REACH

PRODUCT DISPLAY

T F T L C D D I S P L A Y



T F T L C D D I S P L A Y

PRODUCT DETAILS



- High contrast reaches to 600:1
- With EK79001HE & EK73215BCGA IC
- 50 Pin FPC RGB Interface
- Good resoltuion with 1024x600
- 7" Widescreen With 16.7M Color Depth
- Support OEM & ODM Service

