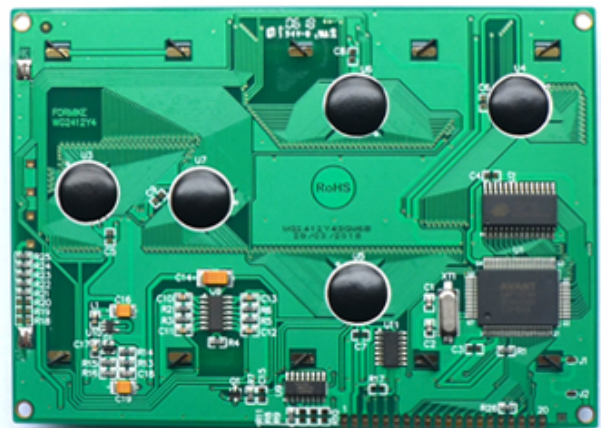
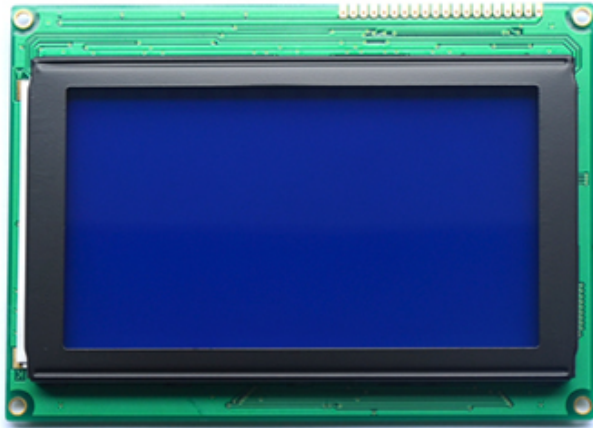


# 240 x 128 LCD 240x128 LCD



LCD	240 x 128 LCD 240x128 LCD		
	240 * 128		STN
	144 * 104 * 17 mm		114 * 64 mm mm
	6h		1/128,1/12
	c	IC	SAP1024B.
	-20°C + 70°C		-30°C + 80°C

\* WG2412Y4SGW6B-E STN LCD

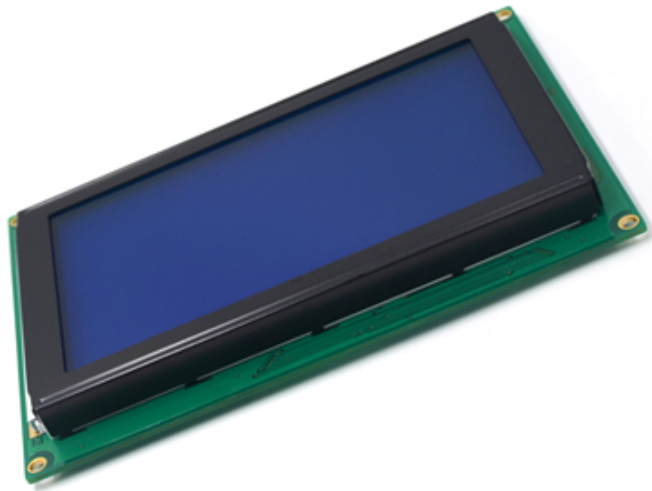
\* LCD IC FPC

\* 240x128 DFSTN LCD

\*

\*

\* RoHS Reach



- 240x128
- STN
- COB
- Graphic
- Transmissive & Negative

