

7" TFT LCD 1024x600 7" TFT



PRODUCT INFORMATION

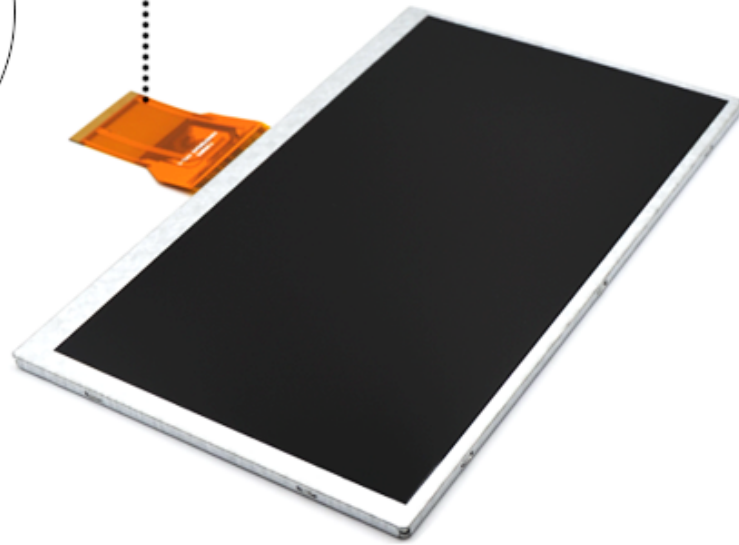
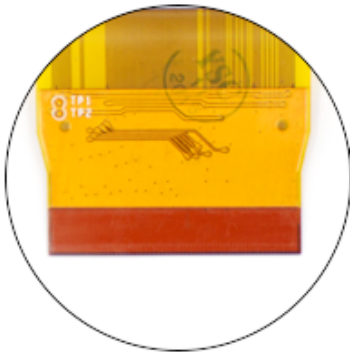
TFT LCD DISPLAY

LCD	7" TFT LCD 1024x600 7" TFT		
LCD	7" LCD	RGB	1024 RGB X 600
Thickness	16.7mm	Resolution	600x1
Dimensions	164.90x 99.90 x 3.50mm	Mounting Hole	154.21x85.92mm
Weight	6g	Resolution	24 RGB 500
Backlight	21 LED	Viewing Angle	350cd / m2
Operating Temp.	-20°C~70°C	Power Consumption	140mA 9.9V

- * KWH070KQ49-F01 TFT LCD
- * TFT LCD IC FPC
- * 1024x600 TFT LCD
- * 200~1500cd / m2
- * RoHS Reach
- *

PRODUCT DISPLAY

T F T L C D D I S P L A Y



T F T L C D D I S P L A Y

PRODUCT DETAILS



- High contrast reaches to 600:1
- With EK79001HE & EK73215BCGA IC
- 50 Pin FPC RGB Interface
- Good resoltuion with 1024x600
- 7" Widescreen With 16.7M Color Depth
- Support OEM & ODM Service

