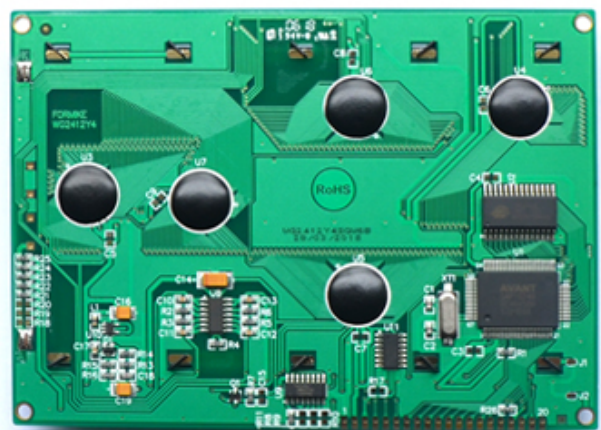
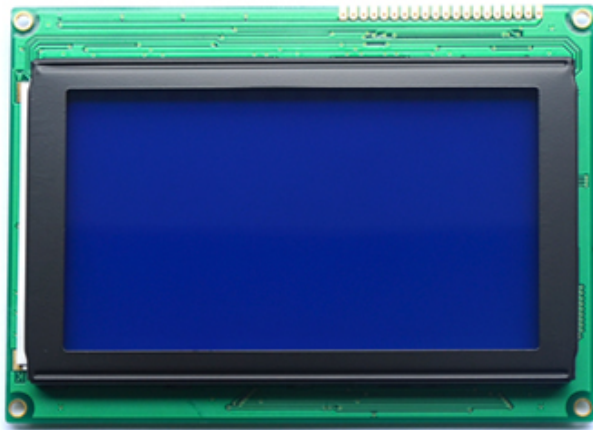
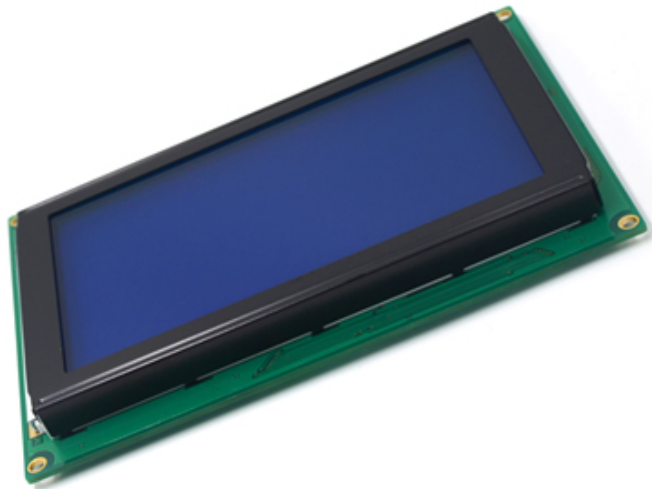


240 x 128 LCD 240x128 LCD



LCD	240 x 128 LCD 240x128 LCD		
Resolution	240 * 128.	Display Type	STN, 1/128, 1/12.
Module Size	144 * 104 * 17 mm.	Module Thickness	114 * 64 mm mm
Number of Layers	6	Display Format	1/128, 1/12.
IC		IC	SAP1024B.
Operating Temp.	-20 °C ~ + 70 °C	Storage Temp.	-30 °C ~ + 80 °C

- * WG2412Y4SGW6B-E. COG STN LCD.
- * LCD, IC, FPC
- * 240x128 DFSTN LCD
- * , , ,
- * , , ,
- * RoHS & REACH



- 240x128
- STN
- COB
- Graphic
- Transmissive & Negative

