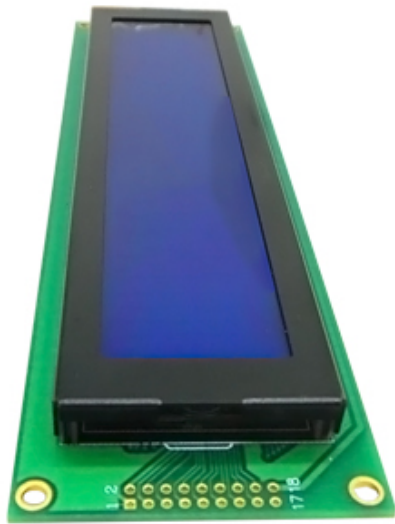
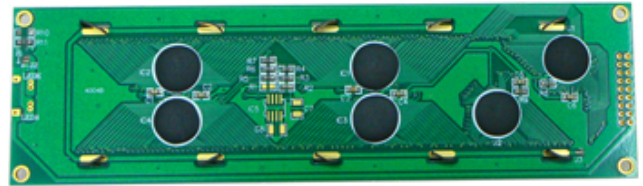


40x4 STN LCD 4004 40 * 4 COB LCD

LCD	40x4 STN LCD 4004 40 * 4 COB LCD		
Resolution	40 * 4	Character	STN, Transmissive, Negative
LCD Type	STN	Backlight	COB
Dimensions	190.0 (W) x 54.0 (H) x 14.9 (T) mm	Mounting Hole	147.0MIN (W) x 54.0MIN (H) mm
IC	HD44780	Pin	18
Pin	6	Pin	
Pin		Pin	1/16, 1/5
Temp. Range	0 °C ~ + 50 °C	Temp. Range	-10 °C ~ + 60 °C



- 40x4
- STN
- COB
- Character
- Transmissive & Negative

