

7" TFT LCD 1024X600 7" TFT



PRODUCT INFORMATION

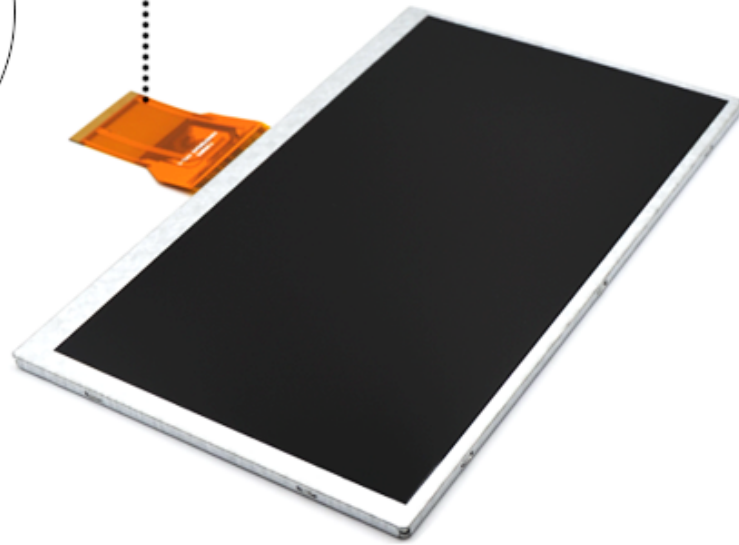
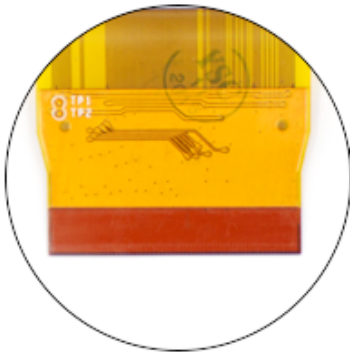
TFT LCD DISPLAY

LCD Model	7" TFT LCD 1024X600 7" TFT		
LCD Type	7" LCD	Resolution	1024 (RGB) x600
Aspect Ratio	16.7m.	Aspect Ratio	600 : 1.
Dimensions	164.90x 99.90 x 3.50mm.	Panel Size (HXV mm)	154.21x85.92mm.
Pixel Pitch	6μm	Color	24-bit RGB, 50°
Backlight	21 LED	Brightness	350cd / m2.
Operating Temp.	-20 °C ~ 70 °C	Power Consumption	140mA 9.9V.

- * KWH070KQ49-F01 LCD module (LCD) only.
- * TFT LCD, IC, FPC, etc. are not included.
- * 1024x600 TFT LCD module.
- * 200 - 1500cd / m2 brightness range.
- * RoHS & REACH compliant.
- * 7" TFT LCD module.

PRODUCT DISPLAY

T F T L C D D I S P L A Y



T F T L C D D I S P L A Y

PRODUCT DETAILS



- High contrast reaches to 600:1
- With EK79001HE & EK73215BCGA IC
- 50 Pin FPC RGB Interface
- Good resoltuion with 1024x600
- 7" Widescreen With 16.7M Color Depth
- Support OEM & ODM Service

