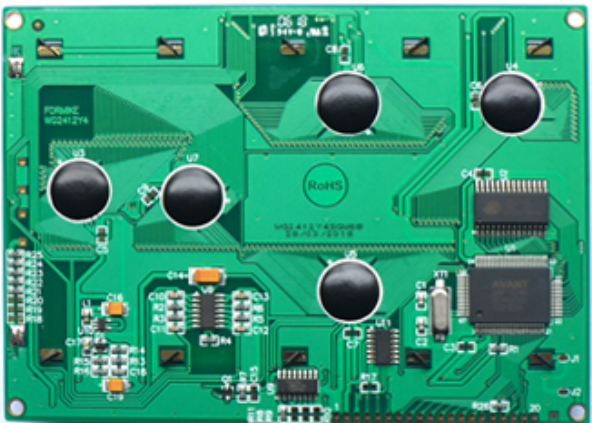
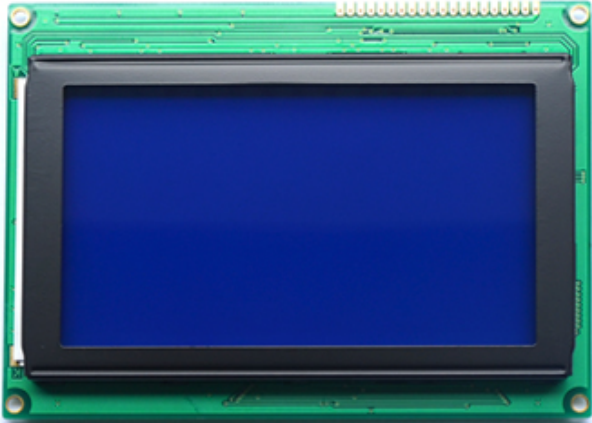
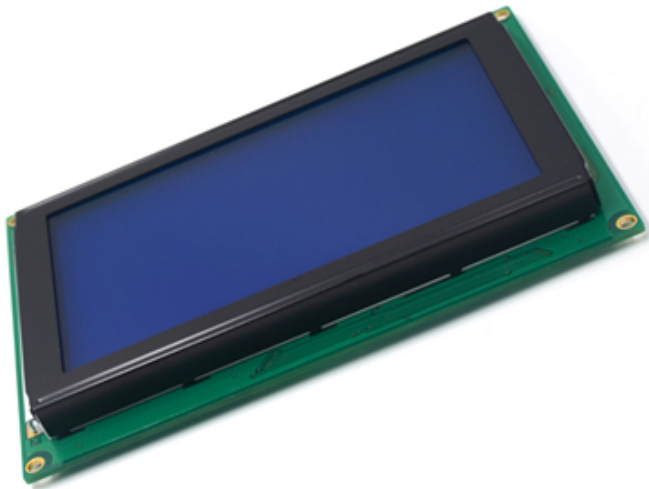


# LCD STN COB 240x128 LCD 240128 LCD



|                 |                                    |                  |                  |
|-----------------|------------------------------------|------------------|------------------|
| LCD             | LCD STN COB 240x128 LCD 240128 LCD |                  |                  |
| Resolution      | 240 * 128.                         | Display Type     | STN, ,           |
| Module Size     | 144 * 104 * 15 mm.                 | Module Thickness | 114 * 64 mm mm   |
| Pixel Pitch     | 60                                 | Pixel Density    | 1/128, 1/12.     |
| Operating Temp. | -20 °C ~ + 70 °C                   | Storage Temp.    | -30 °C ~ + 80 °C |

- \* WG2412Y4SGW6B. COG STN , LCD.
- \* LCD , IC, FPC .
- \* 240x128 STN LCD .
- \* , , ,
- \* .
- \* RoHS & REACH .



- 240x128
- STN
- COB
- Graphic
- Transmissive & Negative

