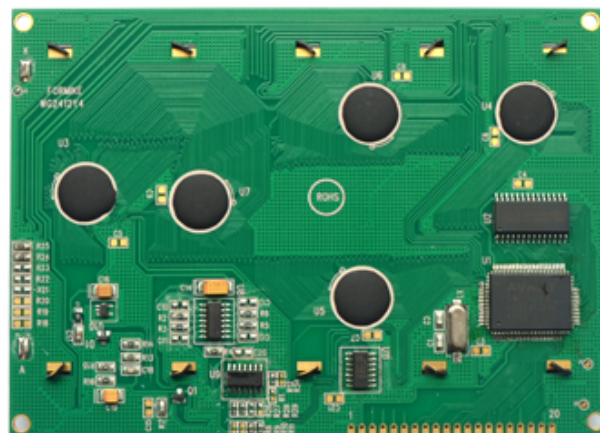
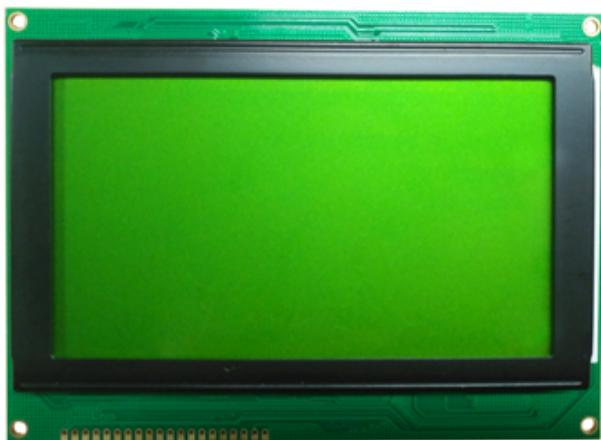
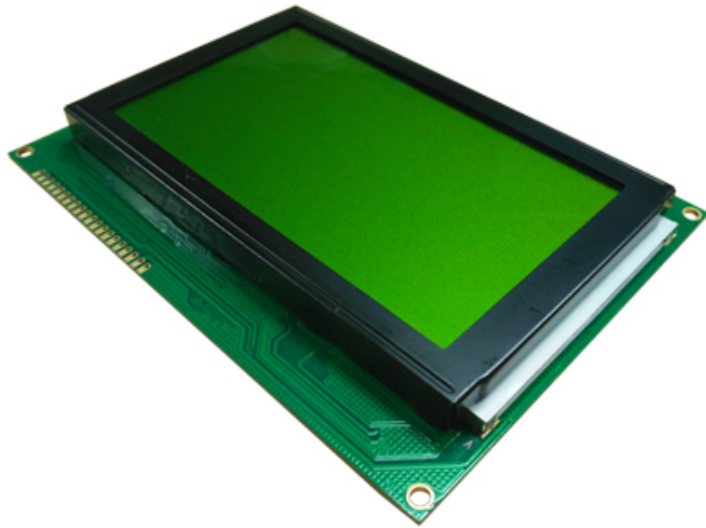


STN LCD 240x128 LCD



LCD	STN LCD 240x128 LCD		
Resolution	240 * 128.	Display Type	STN, Mono, 1/12
Module Size	144 * 104 * 17 mm.	Module Thickness	133.2 * 79.8 mm.
Pixel Pitch	60 μm	Viewing Angle	1/128, 1/12.
Control	IC	Control IC	SAP1024B.
Operating Temp.	-20 °C ~ + 70 °C	Storage Temp.	-30 °C ~ + 80 °C

- * WG2412Y4SBY6B. COB STN LCD.
- * LCD IC, FPC connector.
- * 240x128 STN LCD.
- * Mono, 1/12, 1/128.
- * RoHS & REACH.



- 240x128
- STN
- COB
- Graphic
- Transmissive & Positive

