

1.3 Inch OLED Display SSD1306 128x64 SPI OLED Module

Product Details

OLED Display

Support OEM & ODM Service

- * Low power consumption reaches to 2uA-20uA depending on the size;
- * Thinner, lighter and durable;
- * Full viewing angle;
- * High contrast ratio is up to 10000:1;
- * With fast response time down to 10μs;
- * Best driving voltage control is as low as 3-9V.



Specification

Name	1.3 Inch OLED Display SSD1306 128x64 SPI OLED Module		
Module Size	1.3 inch OLED Module	Dot Matrix	128x64 pixel
Display Color	Monochrome (White or blue light)	Dark Room Contrast Ratio	10000:1
Outline Dimension	34.50 x 23.00 x 1.45mm	Active Area(HxV mm)	29.42 x 14.70mm
Response Time	10 μs	Interface	SPI, I2C, 30pin
Drive Duty	1/64 Duty	Brightness	80cd/m2
IC Driver	SSD1306	Supply Current/Voltage	180mA, 2.8V
Viewing Angle	Free	Pixel Pitch	0.53x0.53 (mm)

* KWH0130UL02 is a passive matrix monochrome white light (optional blue light) OLED Display.

* It is composed of a Monochrome OLED LCD panel, driver IC, FPC.

* It is 128x64 pixels OLED module.

* Specific touch panel can be designed & customized.

* RoHS & REACH compliant.

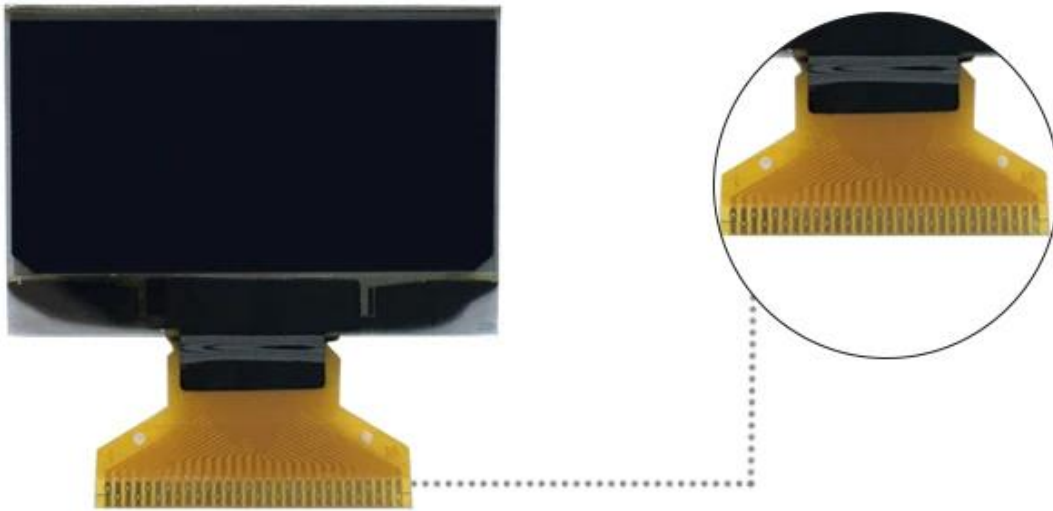
* If you can't find a suitable one, contact us to get a recommendation.

1.3 Inch OLED Display SSD1306 128x64 SPI OLED ModuleKWH0130UL02 is 1.3 Inch 128x64 OLED Display, with SSD1306 driver ic, the interface is 30 Pin SPI or I2C Parallel interface.

The 1.3 Inch OLED Module can be used for Wearable devices, Handheld Terminal, Culture, Education, Sports and Entertainment, Healthcare, Communication equipment and Instrumentation, etc.

If you are searching 1.3" OLED Display Module, please feel free to contact us. We will offer you the best OLED Display Solution and Cost effective price.

Product Details



Industrial Excellent Quality

Superior performance in display contrast ratio,
Luminous efficiency, power consumption
And response time. RoHS Compliant and
With strict production quality control.



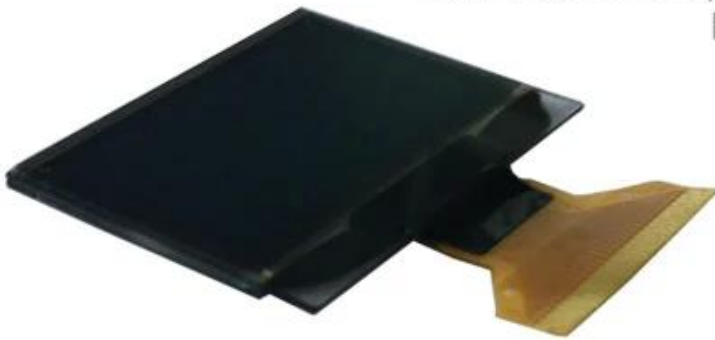
Competitive Price & Customization Solution

Low cost mass production, with attractive price.

Provide you technical service by

Fully experienced engineers.

Support OEM & ODM service.



- * 1.3 Inch 128x64 OLED display
- * White light monochrome PM OLED
- * With 30 pin Soldering FPC
- * With 3/4-wire SPI & I2C in Parallel
- * Support OEM & ODM service



Application



Related Products

Related Products



1.54 Inch 128x64



1.30 Inch 128x64



1.10 Inch 96x96



1.50 Inch 128x128



0.68 Inch 96x32



5.50 Inch 256x64

Our Advantages

OUR ADVANTAGE

FORMIKE TFT LCD DISPLAY

- 01 professional team (Nearly 20years experiences.)
- 02 One-stop service(from design,manufacture to after-sale service).
- 03 Complete production line(80% applied to automation).
- 04 Quality assurance(FCC,CE,RoHS,REACH).
- 05 Management(ISO 9001:2008,ISO 14001:2004, SGS, BV, TUV).
- 06 Support customization
(Driver boards for AV, VGA, MCU and other interfaces,
support LCD screens of different sizes and resolutions)

Company Information

COMPANY INFORMATION

WIFI MODULE & LCD DISPLAY



Formike Group was founded in 1999, which engaged in R&D, design, manufacture and sales of LCD display and accessories parts as well as Wi-Fi modules. All our operations are under ISO 9001:2000 and ISO 14000 standards. The company has a professional customer service team to answer questions for customers. With the help of our 50-people strong R&D team, we can also realize your ODM ideas into a real item within 20 days.

PERFECT QUALITY ASSURANCE SYSTEM



We source our key materials and components from Japan and Germany, where over 10 suppliers have been working with us for over five years. Our 100 QC members conduct strict inspections during the entire production process to ensure our quality meets your requirements. According to the ISO quality inspection system to monitor the quality, the IQC sampling pass rate of the client is above 98%.

ADVANCED PRODUCTION EQUIPMENT

We have 100 CNC machines, 12 polarizer attach machines, 10 2D measuring projectors complete equipment, eight ultrasonic cleaners, six liquid crystal machines, two fully automatic bonding machines, etching machines, fully automatic sticking film machines, cutting machines, UV machines and more apply in our process to ensure that our quality and capacity can always support customers' demand.



EXHIBITION



OUR CERTIFICATE



TRADE INFO

WIFI MODULE & LCD DISPLAY



Packing	Standard carton, corrugated paper+outer carton.
Delivery	In Stock: Delivery time is within 5-8 working days after received your full payment. No Stock: Wifi Module products—About 3-4 weeks LCD Products—About 5-6 weeks
Payment	50-100% deposit in advance and balance before shipping upon the payment amout.
Loading Port	Shenzhen, Hongkong
Shipping	By sea, by air, express

FAQ

T F T L C D D I S P L A Y

1.Q: Order process

A: PO is placed by clients → PI is issued by Formike → Payment by clients → Lead time is confirmed by Formike → Shipping instruction by Clients → Delivery → Cargo tracking → Receipt of cargo

2.Q: Lead time (after payment is confirmed)

A: Sample: 1-10 working days

Volume: 3-60 working days

3.Q: Payment

A: T/T , Western union, L/C, Credit card, and Cash

4.Q: Warranty

A: 12 months warranty (Please find more details via our datasheet by item of Limited Warranty)

5.Q: RMA Process

A: Claimed by clients with photos or videos → Sales rep of Formike confirm if have questions

→ Sales rep issue RMA No to clients if confirmed by QA → Return to Formike → Formal

report after goods received by Formike → Clients confirm the analysis report → Proceeding

as per the Report both agreed

6.Q: Notes

A: Please check both appearance and function of products prior to installation.

Any damage caused by improper use or unprofessional installation is not covered under warranty.

Please feel free to click here and write down your requirements.

We will contact you quickly !!

Send message to supplier

To: Coco Liu

* Message:

Enter your inquiry details such as product name, color, size, quantity, material, etc.

0/8000

Send

☒ I agree to share my Business Card to the supplier.



[Click Here](#)