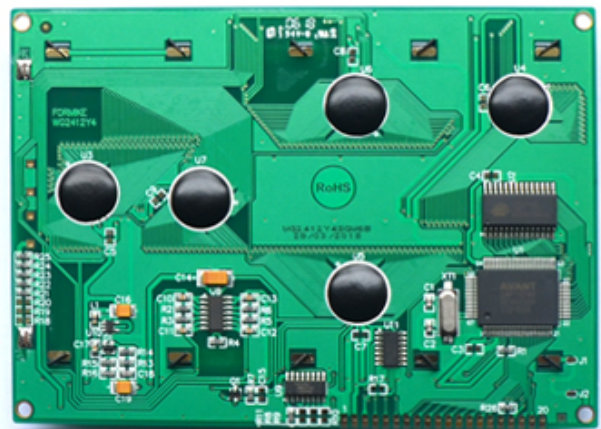
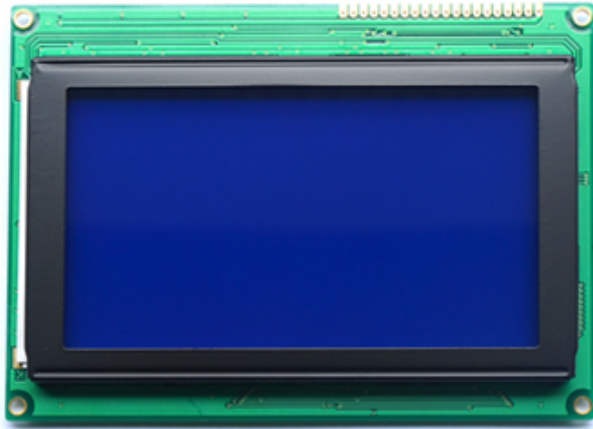
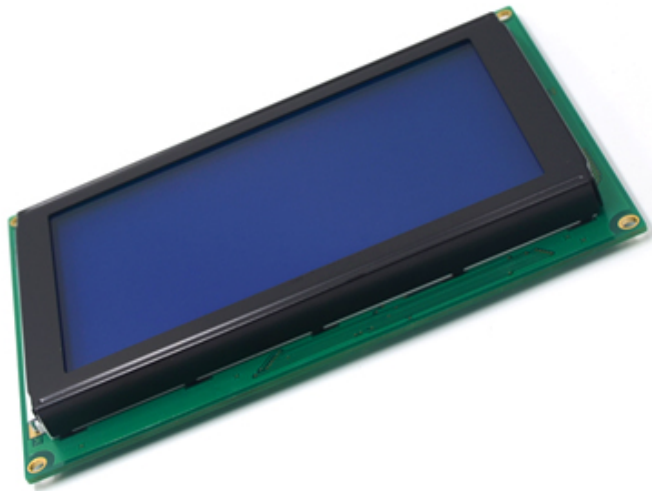


240 x 128 LCD Display Graphic Dot Matrix 240x128 LCD Module



LCD Name	240 x 128 LCD Display Graphic Dot Matrix 240x128 LCD Module		
Display Format	240*128	Display Mode	STN,Transmissive, Negative
Outline Dimension	144*104*17 mm	Active Area	114*64 mm mm
Viewing Direction	6H	DUTY/BIAS	1/128, 1/12
Type	COG	Driver IC	SAP1024B
Working Temp.	-20°C~+70°C	Storage Temp.	-30°C~+80°C

- * WG2412Y4SGW6B-E is a Monochrome color COG type STN negative,Transmissive LCD.
- * It is composed of a monochrome LCD panel, driver IC, FPC, and backlight.
- *It is 240x128 dots monochrome character DFSTN lcd monitor.
- * Backlight with white,blue,yellow,red color
- * Specific touch panel can be designed & customized.
- * RoHS & REACH compliant.



- 240x128
- STN
- COB
- Graphic
- Transmissive & Negative

