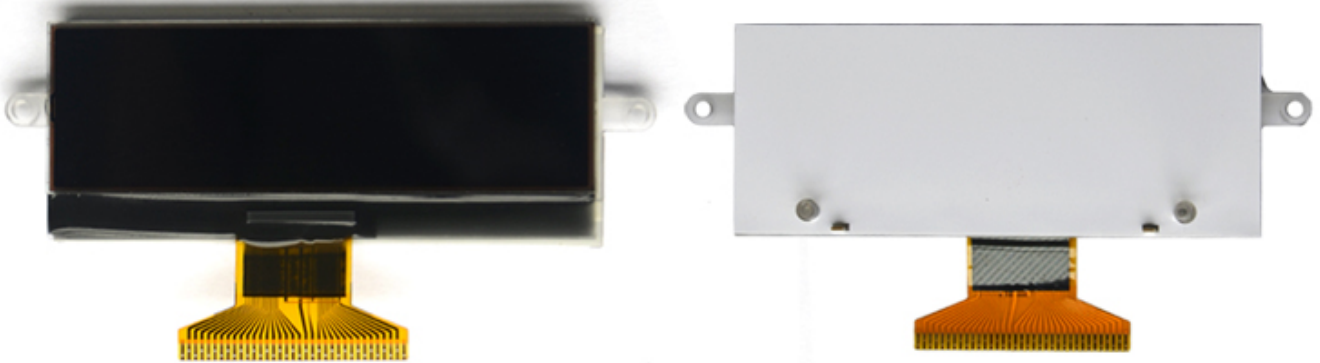
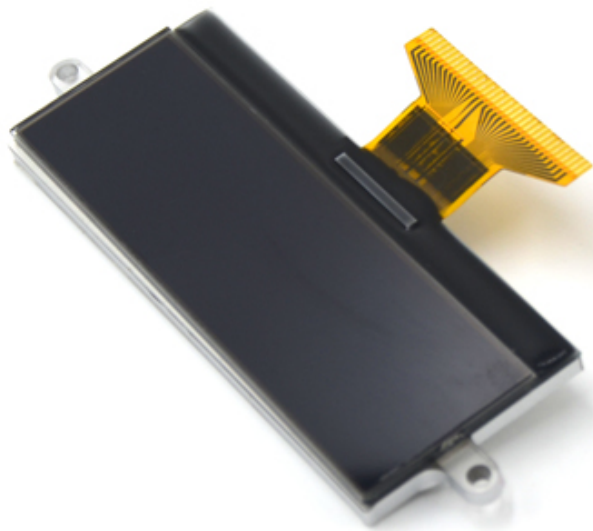


# 35 Pin LCD Panel DFSTN Transmissive Negative Monochrome Screen 240x64 Graphic LCD Module

<b>LCD Name</b>	35 Pin LCD Panel DFSTN Transmissive Negative Monochrome Screen 240x64 Graphic LCD Module		
<b>Display Format</b>	240 X 64 Dots	<b>Display Mode</b>	DFSTN, Negative, Transmissive
<b>LCD Color</b>	Display dot :Black, Background:White	<b>Driver IC</b>	ST7529-G
<b>Outline Dimension</b>	85.0(W) x34.0(H) x9.4(T) mm	<b>Viewing Area</b>	82.0MIN(W) x24.0MIN(H) mm
<b>Viewing Direction</b>	12 O'clock	<b>Interface Input Data</b>	6800 Parallel
<b>Backlight</b>	White	<b>Driving Method</b>	1/64 Duty, 1/9 Bias
<b>Operating Temp.</b>	-20°C~+70°C	<b>Storage Temp.</b>	-30°C~+80°C





- 240x64
- DFSTN
- COG
- Graphic
- Transmissive & Negative

