

7 Inch TFT LCD 1024x600 Resolution 7" Industrial TFT Display Screen Module



PRODUCT INFORMATION

T F T L C D D I S P L A Y

LCD Name	7 Inch TFT LCD 1024x600 Resolution 7" Industrial TFT Display Screen Module		
LCD Size	7 inch LCD Panel	Resolution	1024(RGB)X600 Resolution
Color Depth	16.7M	Contrast Ratio	600:1
Outline Dimension	164.90x 99.90 x 3.50mm	Active Area(HxV mm)	154.21x85.92mm
Viewing Direction	6 O'Clock	Interface	24 BIT RGB, 50 Pin
Backlight	21 White LED	Brightness	350cd/m2
Operation Temperature	-20°C~70°C	Backlight Supply Current/Voltage	140mA 9.9V

* KWH070KQ49-F01 is a small Transmissive type color active matrix liquid crystal display (LCD).

* It is composed of a TFT LCD panel, driver IC, FPC, backlight.

* It is 1024x600 resolution TFT LCD module.

* Backlight with different brightness options from 200 - 1500cd/m2 are available.

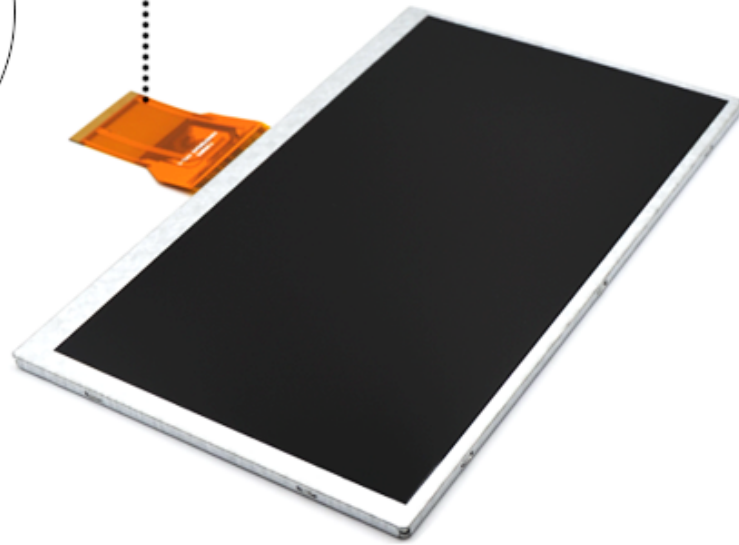
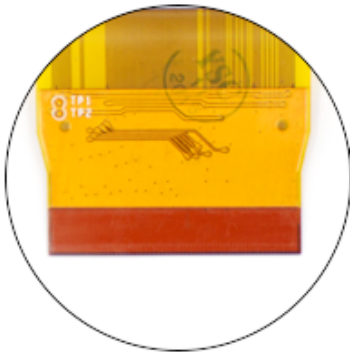
* Specific touch panel can be designed & customized.

* RoHS & REACH compliant.

* If you can't find a suitable one, contact us to get a recommendation.

PRODUCT DISPLAY

T F T L C D D I S P L A Y



T F T L C D D I S P L A Y

PRODUCT DETAILS



- High contrast reaches to 600:1
- With EK79001HE & EK73215BCGA IC
- 50 Pin FPC RGB Interface
- Good resolution with 1024x600
- 7" Widescreen With 16.7M Color Depth
- Support OEM & ODM Service

