

Product Details

COG LCD Display FFSTN 3.3v LCD 16x2 Dot Screen Display

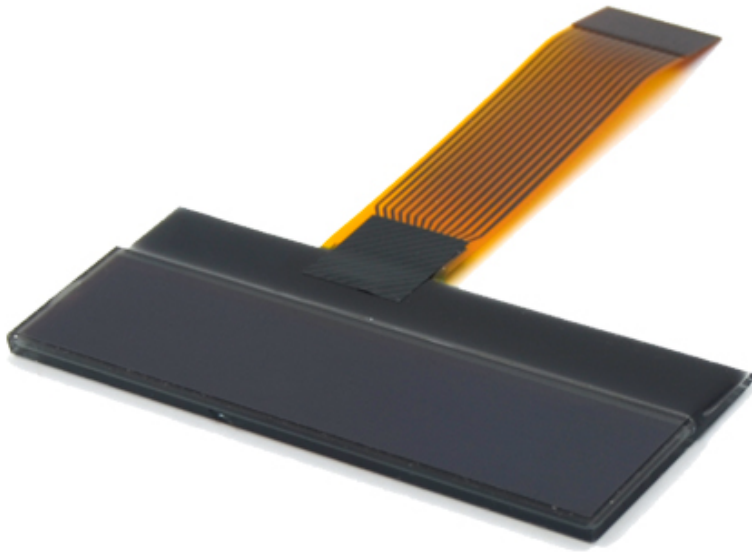
LCD Name	COG LCD Display FFSTN 3.3v LCD 16x2 Dot Screen Display		
Display Format	16character*2 line	Display Mode	FFSTN, Negative, Transmissive
LCD Color	Display dot : White Background: Black	Driver IC	NT7603
Outline Dimension	69.5(W) x79.4(H) x 2.85(T) mm	Viewing Area	64.5(W) x14.5(H)mm
Viewing Direction	6 O'clock	Interface Input Data	4 bit or 8 bit interface
Backlight	Na	Driving Method	1/16 Duty, 1/5 Bias
Operating Temp.	-20°C~+70°C	Storage Temp.	-30°C~+80°C



Front View



Back View



- 16x2
- FFSTN
- COG
- Character
- Transmissive & Negative

