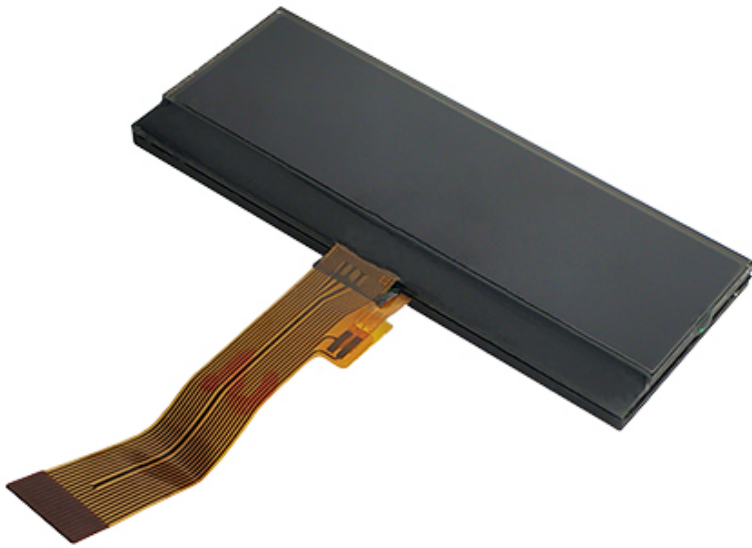


VA Graphic LCD Display Dot Matrix LCD 0802 8x2 COG LCD Module



LCD Name	VA Graphic LCD Display Dot Matrix LCD 0802 8x2 COG LCD Module		
Display Format	8x2 Dots	Display Mode	VA, Transmissive, Negative
LCD Color	Display dot : White, Background: Black	Dot Size	0.7(W) X 0.7(H)
Outline Dimension	77.40(W) x30.60(H) x4.80(T) mm	Viewing Area	74.40MIN(W) x21.60MIN(H)mm
Viewing Direction	6 O'clock	Interface Input Data	SPI
Backlight	White	Driving Method	1/22 Duty, 1/8 Bias
Working Temp.	0°C~+50°C	Storage Temp.	-10°C~+60°C
Driver IC	Uc1623C	Connector	18 Pin FPC



- 8x2
- VA
- COG
- Graphic
- Transmissive & Negative

